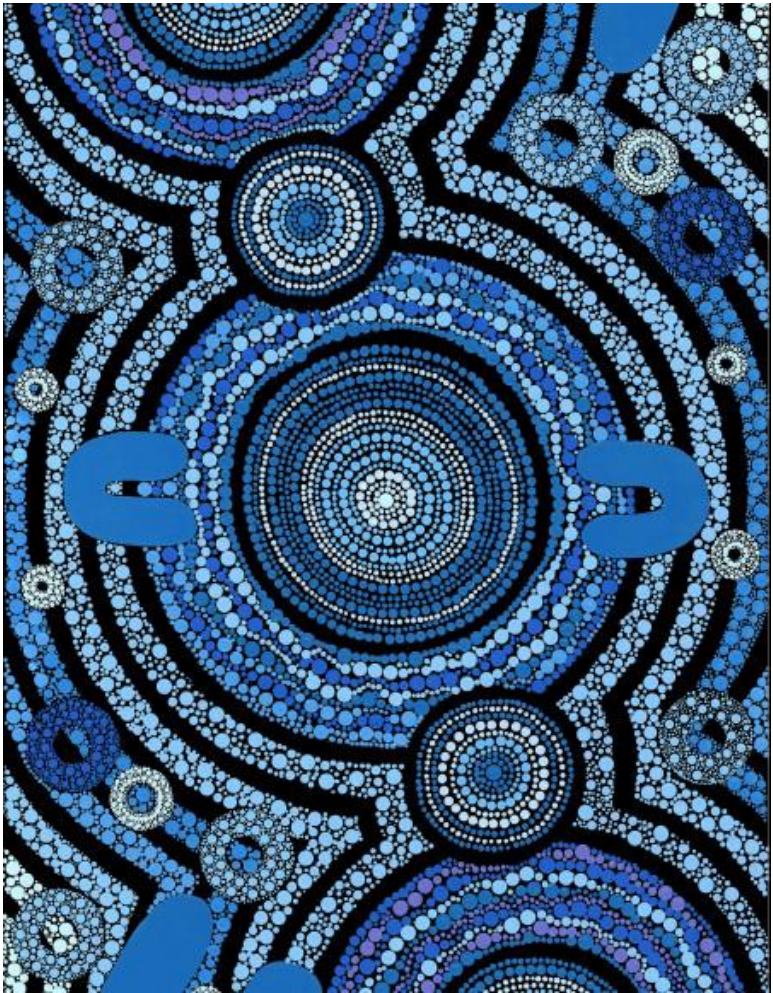


# Craigieburn Primary School Prep Information Session

Tuesday 24th October 2023







**Principal:**  
Bernadette Pizaro



**Acting Assistant Principal  
P-3:**  
Lauren Allen



**Assistant Principal 4-6:**  
Israel Carroll



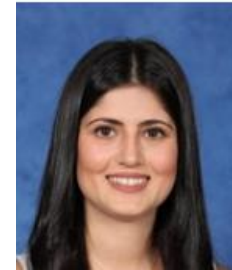
**Leading Teacher:**  
Boban Stanisic



**Leading Teacher:**  
Ferhan Dogan



**Curriculum  
Leader  
Prep:**  
Maria Battisti



**Prep Teacher:**  
Seda Duman



**Prep Teacher:**  
Belinda Finch





At Craigieburn Primary School, our vision is:

*For all children to reach their full potential and become effective members of society.*





## At Craigieburn Primary School, our mission is to:



- Develop Literacy, Numeracy and Thinking Skills.
- Offer opportunities for children to develop social skills to become positive members of the wider community.
- Provide a safe, nurturing environment.
- Recognise and develop individual potential of all students in all areas.
- Provide a stimulating and inclusive curriculum.
- Encourage risk taking and reflection of own learning in a technological environment.





# Our School Values

**BE RESILIENT**

**BE RESPONSIBLE**

**BE KIND**



# Prep Learning Space





# Prep Learning Space





# Daily Schedule

**8:50 a.m.** Children enter room to begin learning for the day.

**9:00 a.m.** Attendance taken. Learning begins

**10:45 a.m.** Eating time

**11:00 a.m. — 11:20 a.m.** Recess

**11:20 a.m.** Learning recommences

**1:15 p.m.** Eating time

**1:30 p.m.—2:30 p.m.** Lunch play

**2:30 p.m.** Learning recommences

**3:30 p.m.** School concludes



# Literacy in the Classroom

## English- Reading

Students have opportunities to work in whole class, small group and independent learning experiences. All tasks support students to develop and practise reading skills and strategies.

The Prep Reading program also develops:

- Concepts about print
- Letter and sound knowledge
- Decoding strategies (word reading strategies)
- Comprehension strategies
- Sight word recognition



# Literacy in the Classroom

## English- Writing

We support our students to progress through the stages of writing by developing:

- Correct pencil grip
- Early concepts of writing
- Grapheme (letter) and phoneme (sound) knowledge and using letters to represent sounds in words
- Handwriting -correct upper and lowercase letter formation
- Punctuation
- Spelling strategies





# Literacy in the Classroom

## English- Speaking and Listening

Children participate in hands on learning experiences such as-

- Developmental Play
- Oral Language Program which promotes authentic language experiences where oral sentence structure and vocabulary can be developed.

Students also participate in a range of songs, rhymes, shared reading experiences and Turn and Talk.



# Numeracy in the Classroom

## Number and Algebra

Number sense activities in Prep include:

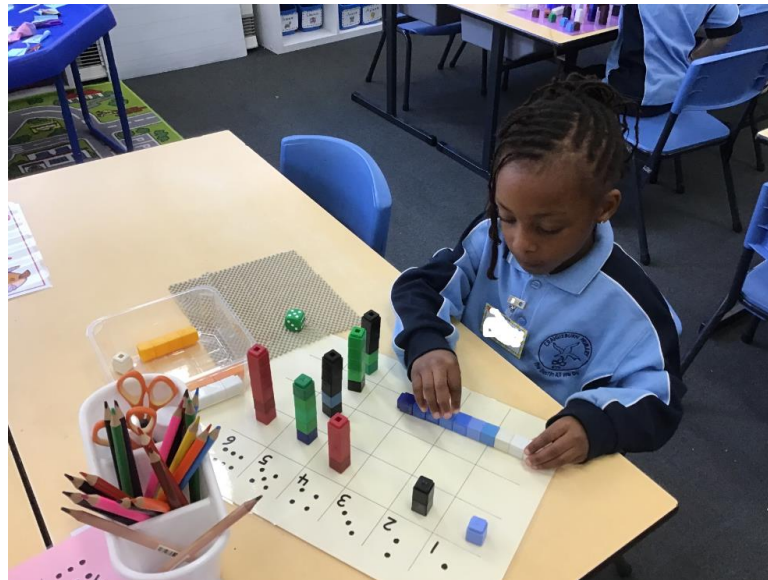
- Counting numbers in sequence
- Comparing and ordering quantities
- Subitising (recognising the amount in a small collection without the need to count)
- Representing addition, subtraction and sharing using practical situations

## Measurement & Geometry

- Recognising 2D shapes and 3D objects
- Measuring the length, mass and capacity of objects using informal units
- Exploring days of the week and connecting them to familiar events and actions

## Statistics and Probability

- Collecting and recording data
- Interpreting results on a graph



# Student Wellbeing

- Breakfast Club every Monday and Thursday morning
- Assembly and Special Event celebrations

## Programs for Wellbeing:

- Social and emotional learning lessons, including with a focus on:

- Understanding Emotions
- Personal Strengths
- Positive Coping Strategies
- Problem Solving Skills
- Help-Seeking Behaviours





# Student Wellbeing

- Access to [Student Support Services](#) including Speech Therapists for speech and language programs, [Director of Wellbeing](#), [Wellbeing Team](#)
- Referrals to the [Wellbeing Team](#) can be made by students, teachers or families
- It is important that the school has up to date information about your child's [health and wellbeing](#)



- Every classroom has access to 10 iPads
- iPads are used in Literacy, Numeracy & Inquiry learning
- Reading Eggs & Maths Seeds are utilised to support children's learning



# Specialists

Students will participate every week in Physical Education, Visual Art, Performing Arts, STEM & Auslan.





# Specialists



# Buddy Program

At the beginning of the school year, every Prep student is allocated a Senior Buddy who has been carefully selected to assist them to settle into school. This supports a smooth transition to school. Children complete a variety of activities to build strong relationships.



# The Playground

- There is a designated location for Prep children to play in.
- Recess is from 11:00-11:20 am and lunchtime is from 1:30-2:30 pm
- Teachers on yard duty wear a fluorescent vest for easy recognition.
- Gates are locked at 9:00 am and are opened at 3:15 pm





# Snacks at School

10:45 am—11:00 am

Make sure your child can open their playlunch independently (practise at home!) Please provide healthy food to sustain your child for learning and play.

The recommended drink at school is water. Please provide your child with a drink bottle.



# Lunch at School

1:15 pm—1:30 pm

Please note: Teachers are not able to heat food



Developed in conjunction with the Healthy Together Achievement Program to support a whole-school approach to healthy eating. Healthy Together Victoria is improving the health of Victorians, funded by the Victorian Government.

# Lunch Orders



Welcome!

Enter your email address below and click register.

EMAIL

CONFIRM EMAIL ADDRESS

COUNTRY

Australia

Need some help?



REGISTER



- Lunch orders are ordered and paid online through the Flexischools App.



# Prep Assessment

Every Prep student will complete the Prep Entry Assessment with their classroom teacher. The assessment focuses on literacy and numeracy and will be hands on and engaging.

You will need to bring your child to their classroom 10 minutes before the assessment starts.

You do not need to attend the assessment.

You will need to book in your child through Compass. More information and dates to come.



# Prepare Your Child For School

- Be positive about starting school
- Establish a regular sleep routine
- Arrange playdates with other families whose children will be going to CPS
- Practise school readiness tasks (putting things in their bags, wearing a hat)
- Show your child where the school is and talk about how you will get there
- Teach your child how to use a shared toilet
- Support your child to practise putting on and taking their jumper off independently



# Ways Parents Can Help At School



- Volunteer in the canteen
- Help in the classroom
- Join the Community Events & Fundraising Committee
- Become an elected member of our School Council



# Prep Transition Program

## Prep Transition Session 1 & 2

**Friday 10th November & Friday 24<sup>th</sup> November**  
**9:15-10:30**

- Students will participate in school-based activities and routines
- Parents Morning tea/ Coffee in the staffroom

## Prep Transition Session 3

**Tuesday 5<sup>th</sup> December**  
**9:15-10:30**

- Students will meet their teacher and class and participate in a variety of activities
- Parent session: **Supporting your child to start school**



# Prep 2024 First Week of School

Monday 29th January: Curriculum Day **No students**

Tuesday 30th January: Curriculum Day **No students**

Wednesday 31st January: NO SCHOOL FOR PREPS- Prep Assessment Day

Thursday 1st February: 9:00 am - 1:15 pm

Friday 2nd February: 9:00 am - 1:15 pm

Children need to enter their classrooms at 8:50 am





# The First Day

**Thursday 1<sup>st</sup> February**  
**Preps Commence 8:50 am - 1:15 pm**

Children enter through the school gate and  
line up at their classrooms.



# Entrances to our School



Our main entrance and car park is off Grand Boulevard.  
( Library Gate )

We also have a gate that leads to Northumberland Circuit.  
( Room 24 Gate )

Another gate can be accessed from Fawkner Lane.  
( Gym Gate )





# School Uniform



Uniforms can be purchased through PSW.  
PSW is located at Campbellfield.

Note: All children **MUST** wear a school hat during Terms 1 and 4.

**PSW** 

**CAMPBELLFIELD**  
**PSW RETAIL OUTLET**



1118866 SS Contrast Polo  
Sky with Navy Insert & White Trim



1118868 LS Contrast Polo  
Sky with Navy Insert & White Trim



1100290 Crew Neck  
Windcheater, Navy



1100261 Fleece Bomber  
Navy with Sky Stripes



1100271 Fleece Polo  
Navy with Sky Stripes



1118491 Microstretch  
Bucket Hat Ink



8362220 Eco Recycled Backpack



1103068\_405  
Sky, Navy & White Check



1104002\_536  
Ink & Blue Check Tunic



1110423 Ribbed Cuff  
Double Knee Trackpant



1110415 Double Knee  
Straight Leg Trackpant



1110465 Classic Pant



1110355 Gaberdine  
Elastic Waist Shorts



1100375 Gaberdine Skort



8300396 Primary Pete Book Bag



2511050 Crew Socks  
3 Pack - Navy, White

# Compass

Compass is the communication tool used at Craigieburn Primary School.

It is used for:

- The 2024 Prep Student Survey will also be sent out via Compass
- Booking an appointment for Prep Assessments for the beginning of 2024
- Attendance (entering child's absence)
- Viewing Semester Reports
- Adding attendance information
- School Newsletters
- Consenting and paying for school events
- Booking in for our Student Led Conferences



# Website & Newsletter

Our School Newsletter is available via  
Compass and our Website each  
fortnight on Friday. This informs  
parents of upcoming events and current  
news.



Our School Newsletter

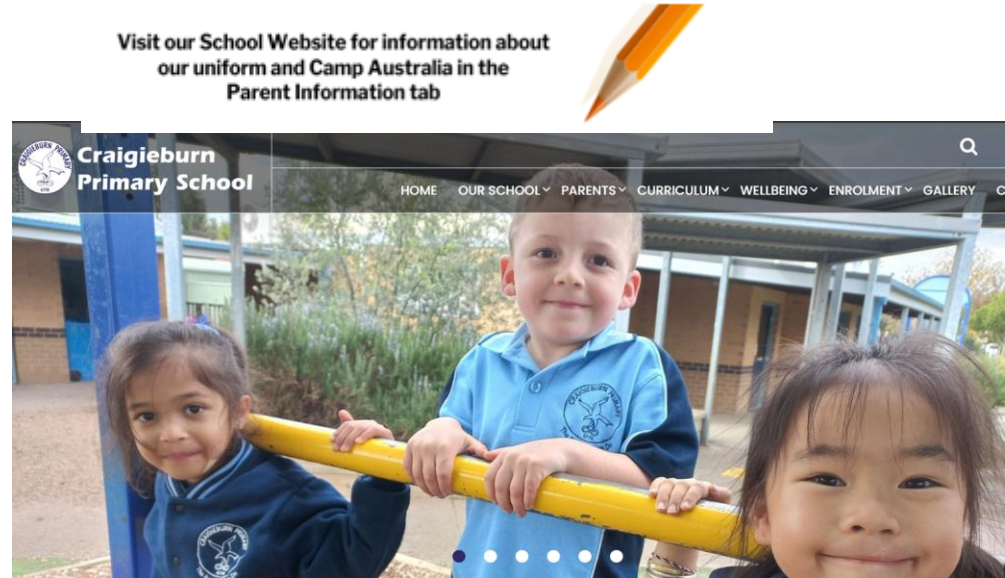


# OSHC-Out of School Hours Care

**Camp Australia** provides our Out of School Hours Program (OSHC).

The OSHC program is provided before school, after school and on Pupil Free days.

The program is run on the school premises and operates between 7.00 to 8.45 am and 3.30 to 6.30 pm



# 2024 Prep Student Survey

[Prep Student Survey Link](#)

## 2024 Prep Student Survey

Please complete this Questionnaire about your child. The answers will help us to place your child in a grade.

Your child's full name \*

Short-answer text

Did your child go to Preschool or Day Care in 2023? \*

☐ Yes

☐ No





**Thank You!**  
**We will now**  
**answer**  
**questions you**  
**may have**

